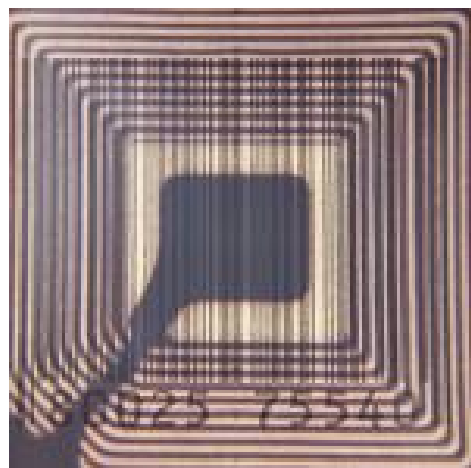


Placing location information about citizens (Plaats voor locatiegegevens van burgers)



Charlotte van Ooijen

Tilburg University, The Netherlands

GeoGov – RGI-024

Dissertation time line

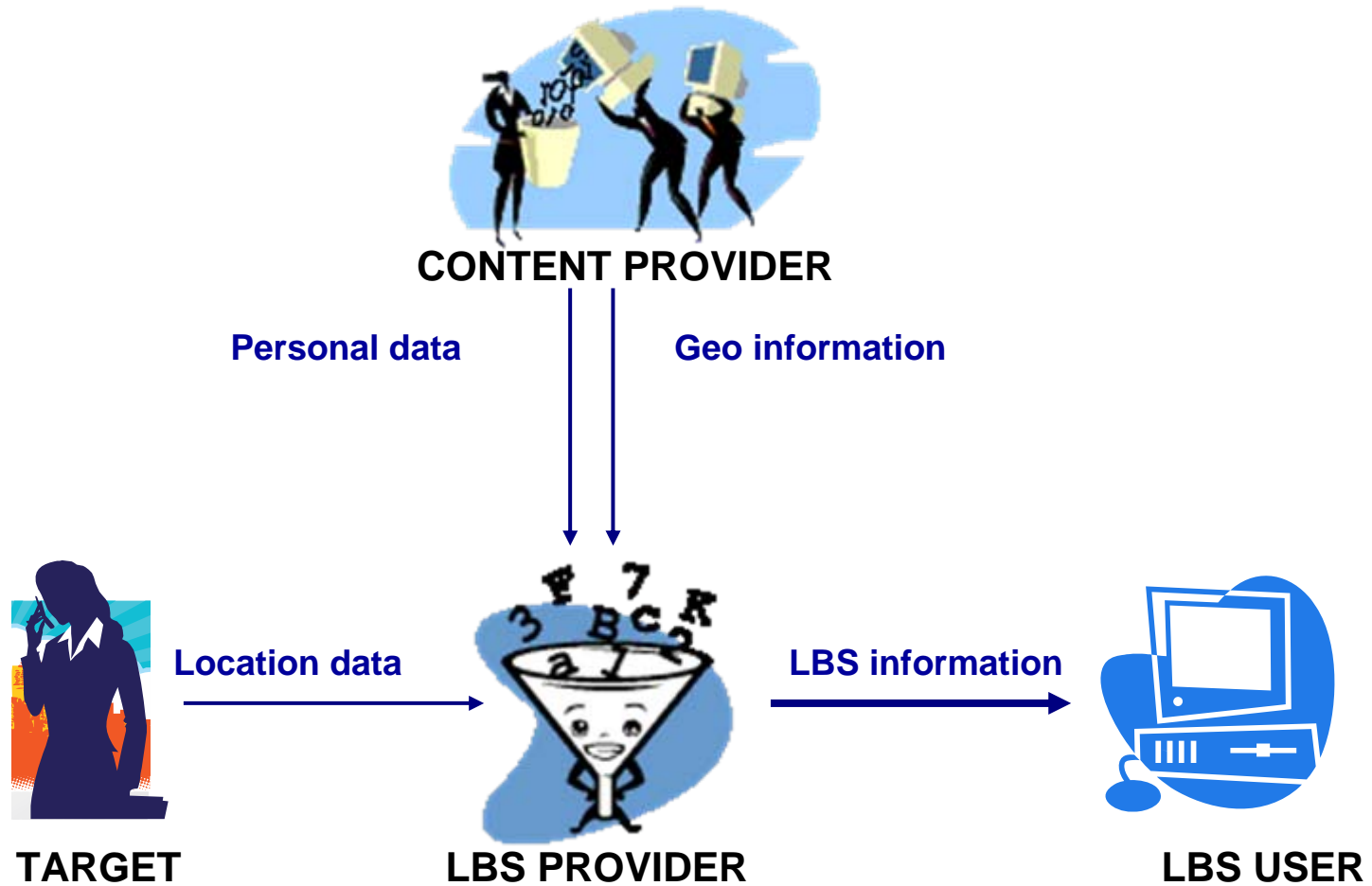
- Year 1: Dec 2006 – dec 2007
Narrowing down research problem
 - > from geo-information to LBS
 - > from public domain to citizen-government relationship
- Year 2: Dec 2007 – dec 2008
Finding theoretical focus
 - > distinguishing 3 citizen roles; connected to e-government theory; descriptive and normative*Starting empirical research*
 - > accessing first case study: ANPR in Dutch policing*First dissertation-related publication*
 - > C.W. van Ooijen, 'LBS en de legitimiteit van het openbaar bestuur: een bestuurskundig perspectief op het volgen van burgers', *Privacy en Informatie*, 2008.
- Year 3 & 4: 2009-2010
Finishing empirical research & manuscript

What are Location-based Services?

Location-based services are IT services for providing information which has been created, compiled, selected or filtered taking into consideration the current locations of the users or those of other persons. (Küpper, 2005: xi)

- Finding out more easily, quicker and more accurately where a person (myself and/or others) is or was.
- Connection location data to personal data and/or geo-information

The LBS Supply Chain





LBS and the citizen-government relationship

- Orwell: the citizen as a subject
 - > Discipline & control
 - eg Dutch Road pricing system
- Soft sister: the citizen as a client
 - > Enhanced public service
 - eg Dynamic road signs
- Athens: the citizen as a citizen
 - > Democratic cooperation
 - eg Location-based SMS consultation

Research method

3 case studies: selection based on dominant citizen role

- Document analysis: policy reports, internal memos, external correspondence, etc.
- Interviews: policy stakeholders, operational key figures
- Observation: decision making and interaction with LBS-information

Case study 1: ANPR in Dutch policing

- Automatic Number Plate Recognition
- Intelligence led policing
- Smart cameras detecting and logging vehicles' movements
- Connection with database of several public institutions
- Applications for crime fighting
 - > tracking car thieves
 - > monitoring stalkers
 - > finding murderers
- Q: legitimacy?
 - > ethical dilemmas
 - > expliciting values at stake